

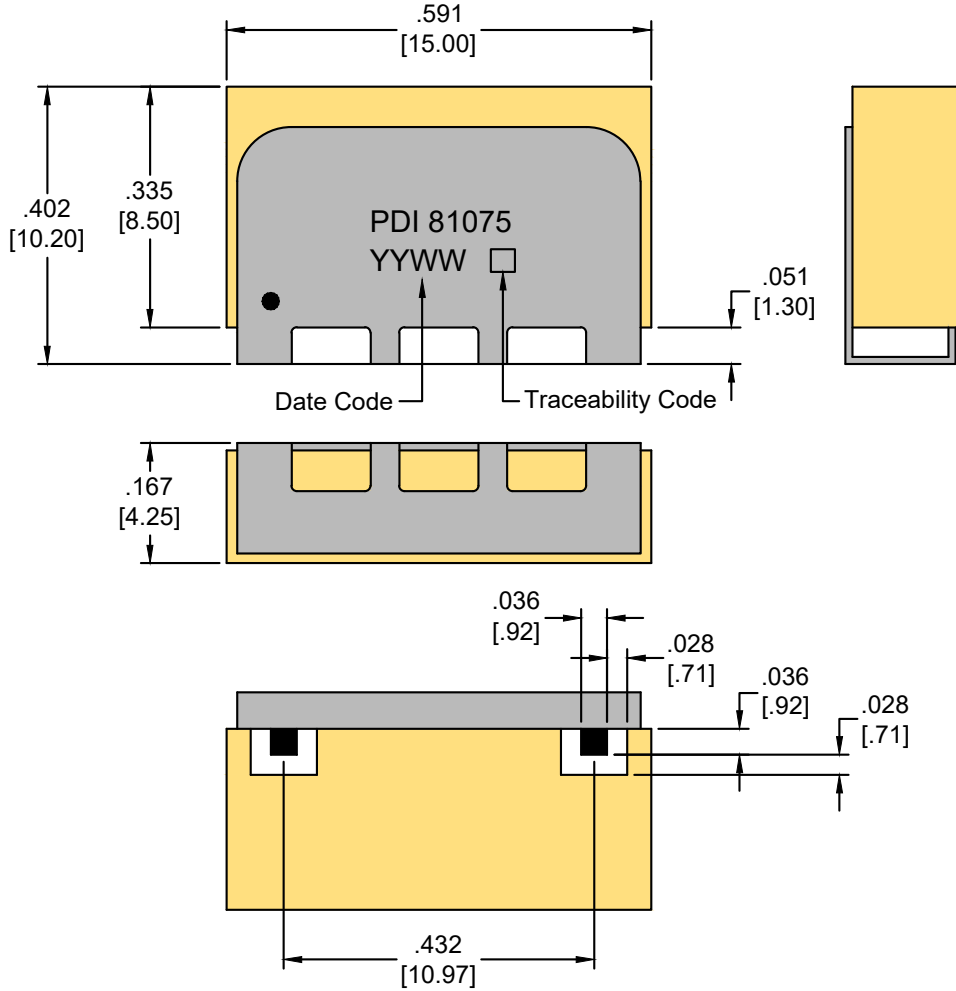
Dielectric Bandpass Filter

15.00L x 10.20W x 4.25H (mm)

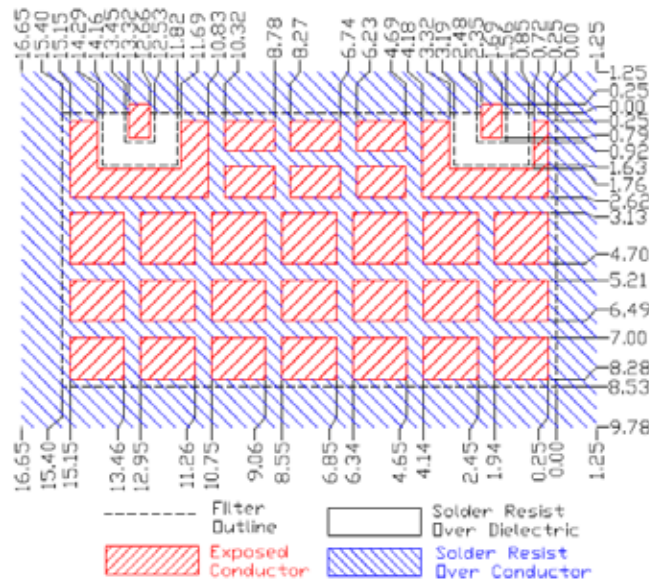
Parameter	Symbol	Conditions	Min	Typ	Max	Unit
Center Frequency	Fo			1227.0		MHz
Frequency Range			1212.0		1242.0	
Insertion Loss in BW		@ 25°C			2.8	dB
		@ -40°C to +105°C			3.0	
Ripple in BW		@ 25°C			0.9	dB
		@ -40°C to +105°C			1.0	
Return Loss			12.0			dB
Group Delay		@ 1228.0 MHz	18.0	21.0	24.0	nS
Group Delay Ripple		@ 25°C			7.5	nS
		@ -40°C to +105°C			8.0	
Attenuation		@ 0.1 MHz to 1152 MHz (@ 25°C)	46.0			dB
		@ 1302.0 MHz to 1900.0 MHz (@ 25°C)	46.0			
		@ 0.1 MHz to 1152 MHz (@ -40°C to +105°C)	45.0			
		@ 1302.0 MHz to 1900.0 MHz (@ -40°C to +105°C)	45.0			
Power Handling					2.0	W
Terminating Impedance		In/Out		50		Ω
Operating Temperature			-40		+105	°C
Storage Temperature			-40		+125	°C

PACKAGE DIMENSIONS

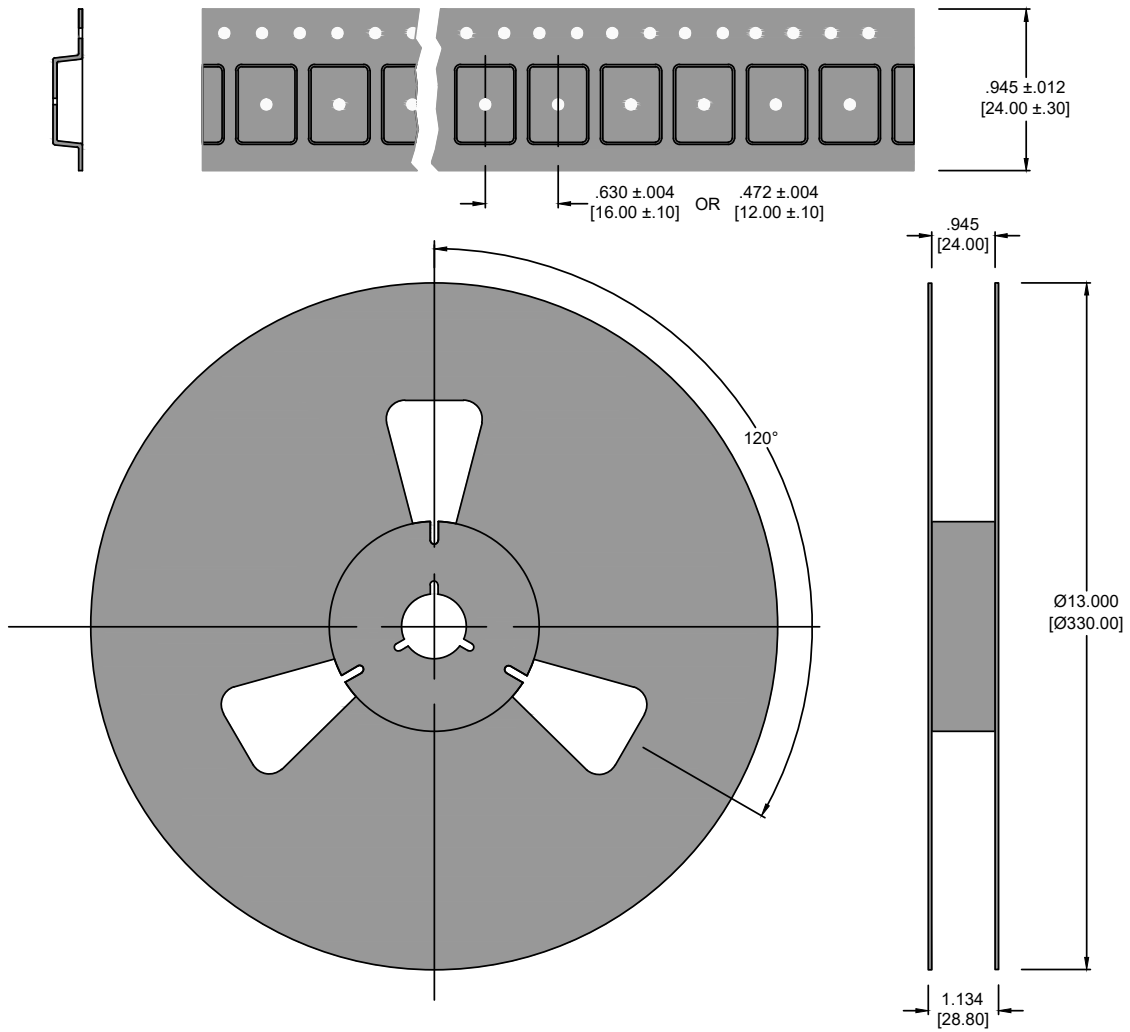
Tolerance: ± 0.12 [.30mm] (Unless otherwise specified)



PCB Layout



Tape and Reel



Reflow Profile

