

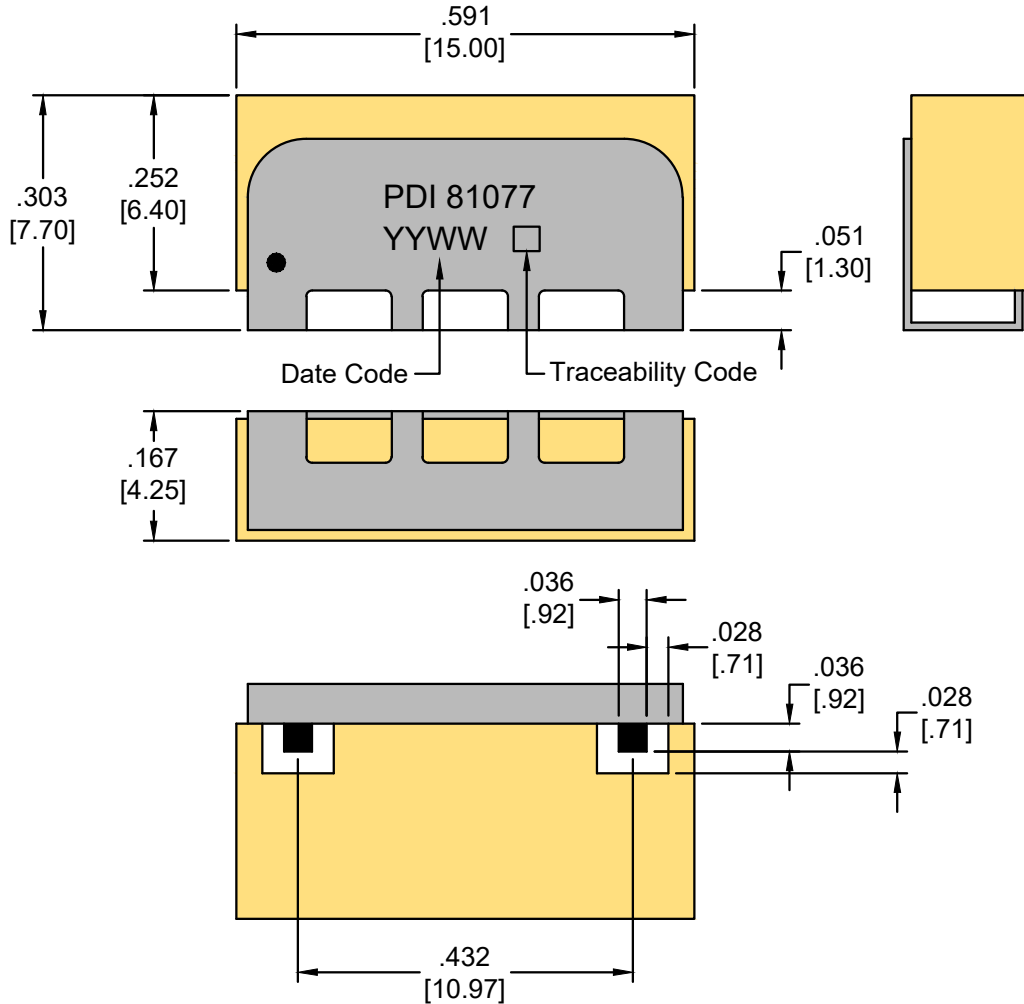
Dielectric Bandpass Filter

15.00L x 7.70W x 4.25H (mm)

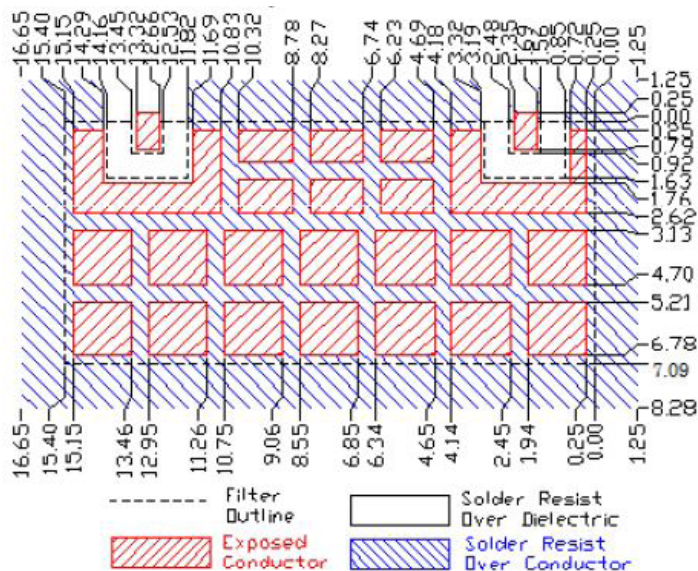
Parameter	Symbol	Conditions	Min	Typ	Max	Unit
Center Frequency	Fo			1575.42		MHz
Frequency Range			1560.42		1590.42	
Insertion Loss (Fo)		@ 25°C			4.1	dB
		@ -55°C to +105°C			4.3	
Insertion Loss in BW		@ 25°C			5.1	dB
		@ -55°C to +105°C			5.3	
Ripple in BW		@ 25°C			0.9	dB
		@ -55°C to +105°C			1.0	
Return Loss			13.0			dB
Group Delay		@ 1575.42 MHz	22.0	25.0	28.0	nS
Group Delay Ripple		@ 1563.42 MHz to 1587.42 MHz (@ 25°C)			11.0	nS
		@ 1563.42 MHz to 1587.42 MHz (@ -55°C to +105°C)			12.0	
Attenuation		@ 0.1 MHz to 1523.42 MHz (@ 25°C)	55.0			dB
		@ 1627.42 MHz to 2500.0 MHz (@ 25°C)	55.0			
		@ 0.1 MHz to 1523.42 MHz (@ -55°C to +105°C)	55.0			
		@ 1627.42 MHz to 2500.0 MHz (@ -55°C to +105°C)	55.0			
Power Handling					2.0	W
Terminating Impedance		In/Out		50		Ω
Operating Temperature			-40		+105	°C
Storage Temperature			-55		+125	°C

PACKAGE DIMENSIONS

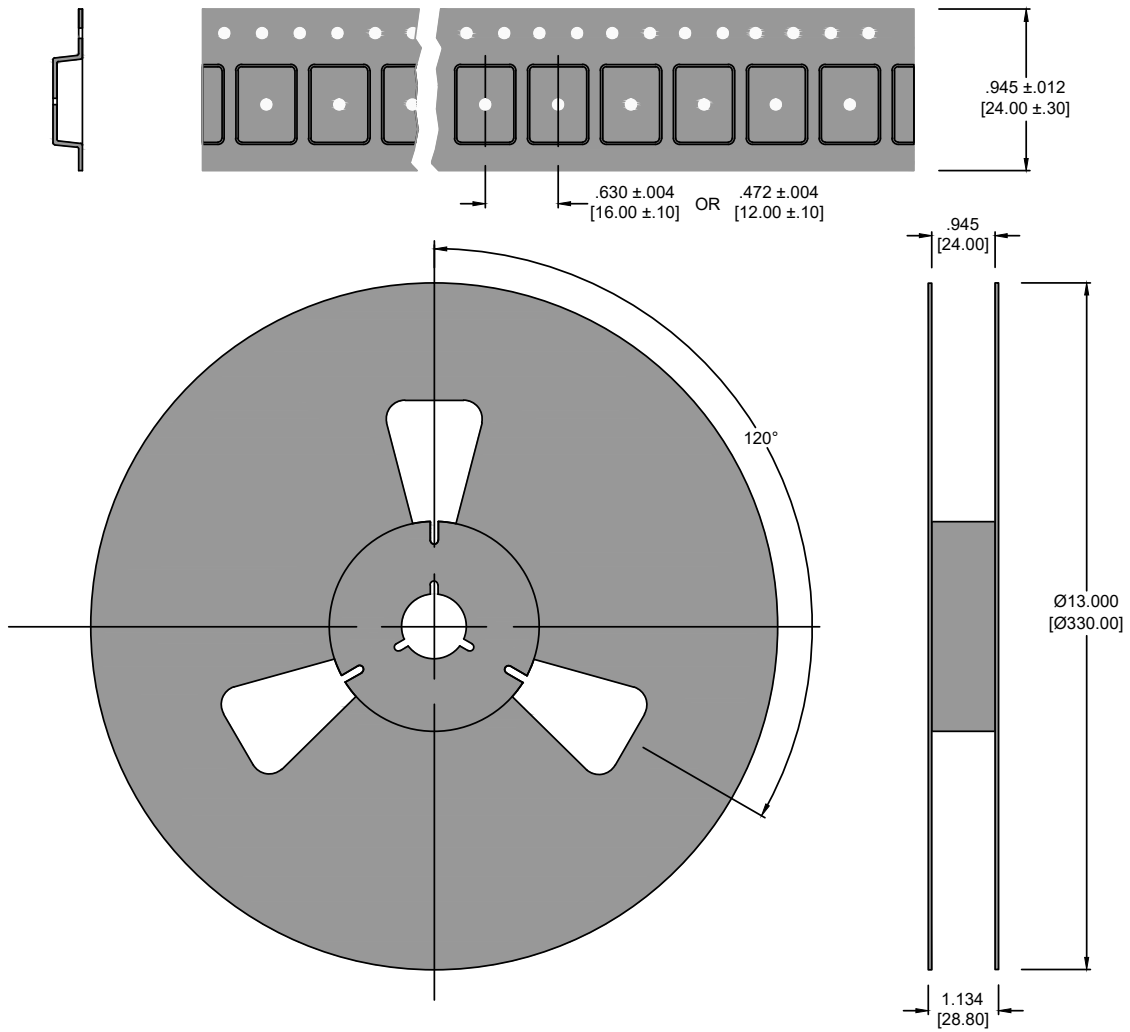
Tolerance: ± 0.012 [.30mm] (Unless otherwise specified)



PCB Layout



Tape and Reel



Reflow Profile

